

Accommodation doors

Type B-15M Type I & Type II

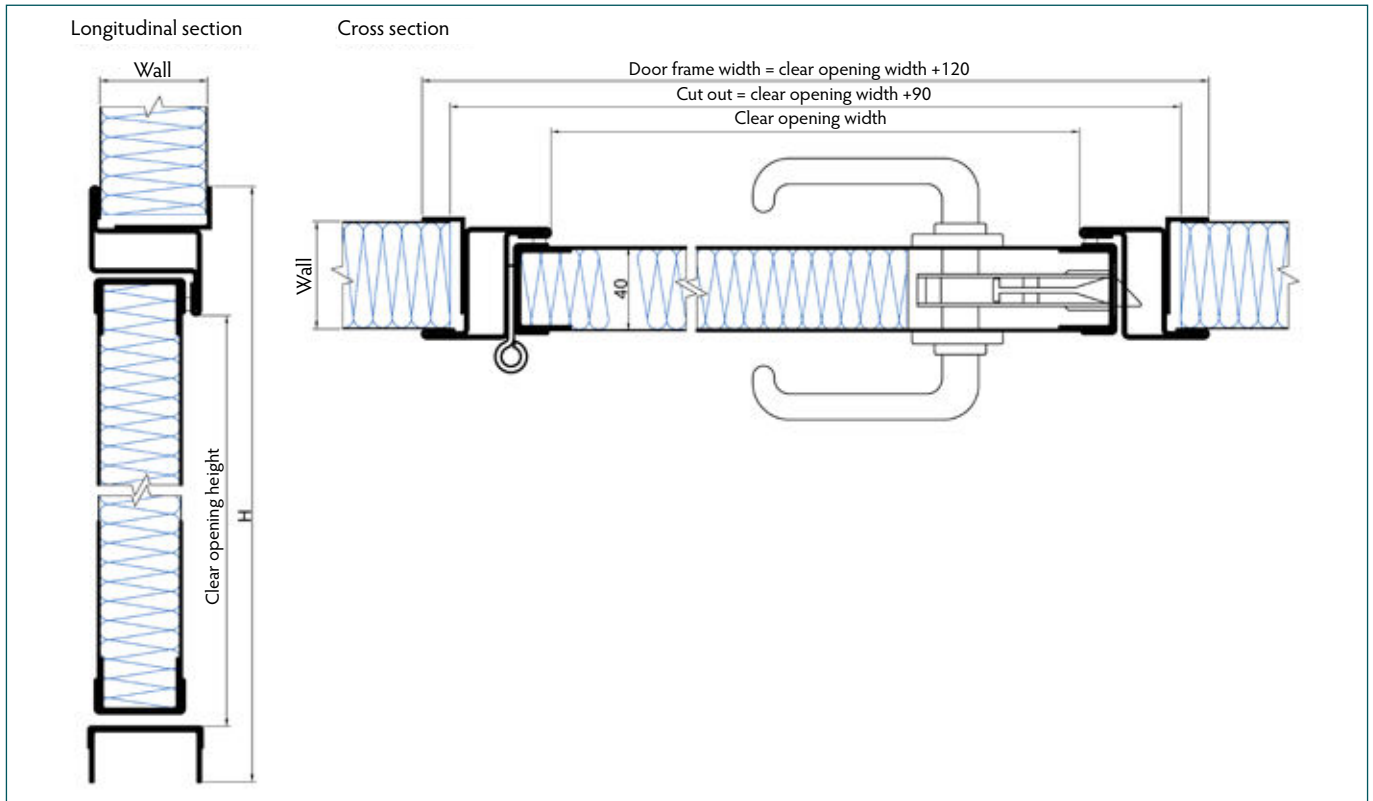


The B-15M accommodation door is used in B-15 fire rated wall systems and can be installed during or after the adjacent wall panels have been assembled. The split clamping frame can be adjusted to fit all relevant wall systems thicknesses. Depending on customer specifications various frame and coaming types as well as additional fixtures can be chosen.

A large variety of surface finishes are available. All of them fitted with a removable protection foil to prevent any damage from occurring during installation. The design of the B-15M accommodation door and all components have been tested and approved according to international standards.

Accommodation doors

Type B-15M Type I & Type II



Technical data	B-15M Type I	B-15M Type II
Covering layer (visible side)	Steel	Steel
Covering layer (back side)	Steel	Steel
Fire classification	B-15	B-15
Sound reduction	up to 36 dB *	up to 40 dB *
Thickness	40 mm	40 mm
Element width - Clear opening	up to 1,150 mm **	up to 850 mm
Element height - Clear opening	up to 2,200 mm **	up to 2,009 mm
Weight	~ 59 kg ***	~ 67 kg ***
Equipment - Ventilation	up to 500 cm ²	---
- Kick-out panel	up to 600 x 600 mm	---
- Window	up to 400 x 400 mm or Ø 400 mm	---
Coating	PVC foil varnish coated (others on request)	PVC foil varnish coated (others on request)
Certification	MED, USCG	MED, USCG

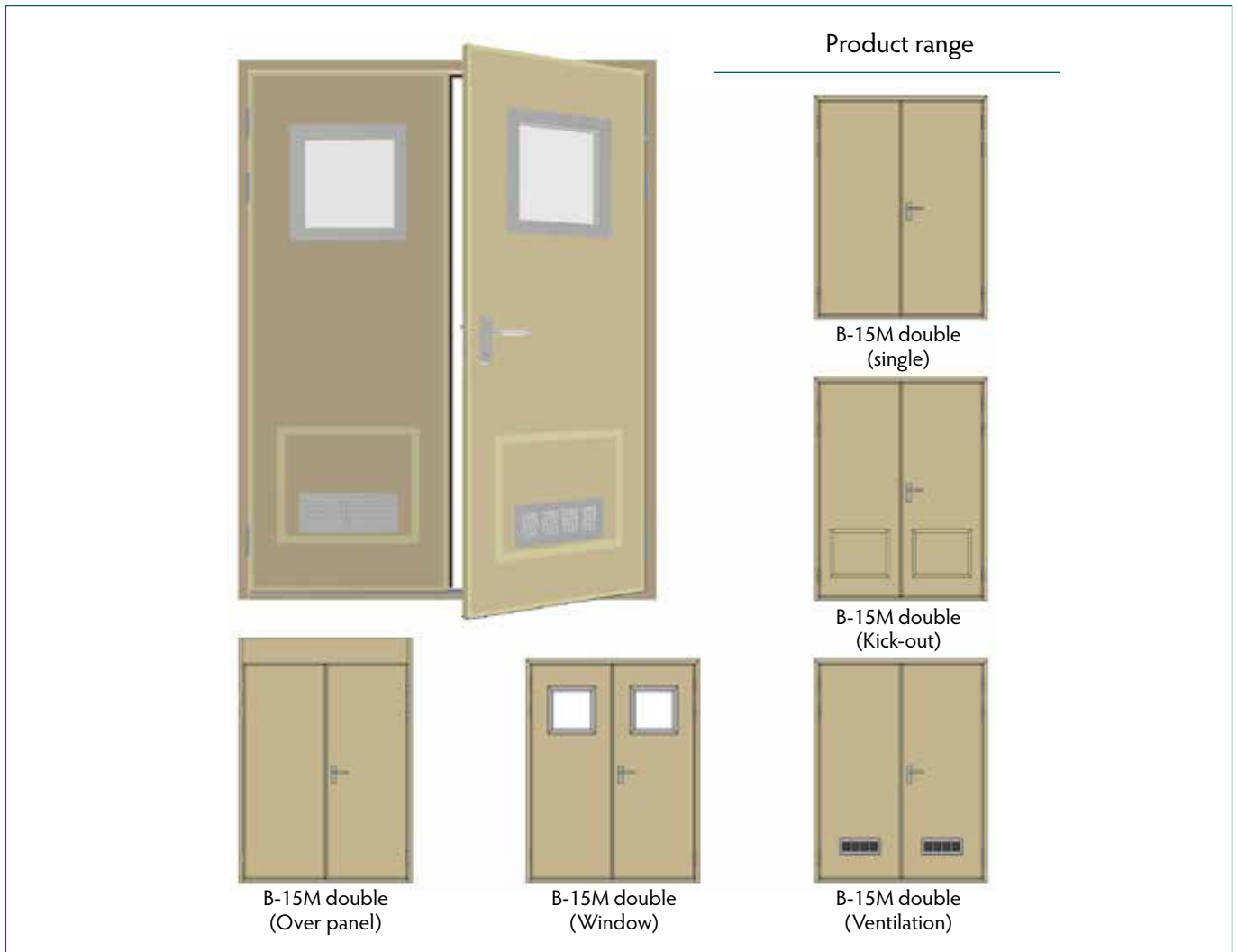
* please contact us for further information

** tested and certified according to MSC.1/Circ.1319 allowing additionally +15% in width & height (surface area +10%)

*** based upon clear opening of 800 x 2,000 mm, without lock, escutcheons, handles and additional equipment

Accommodation doors

Type B-15M double

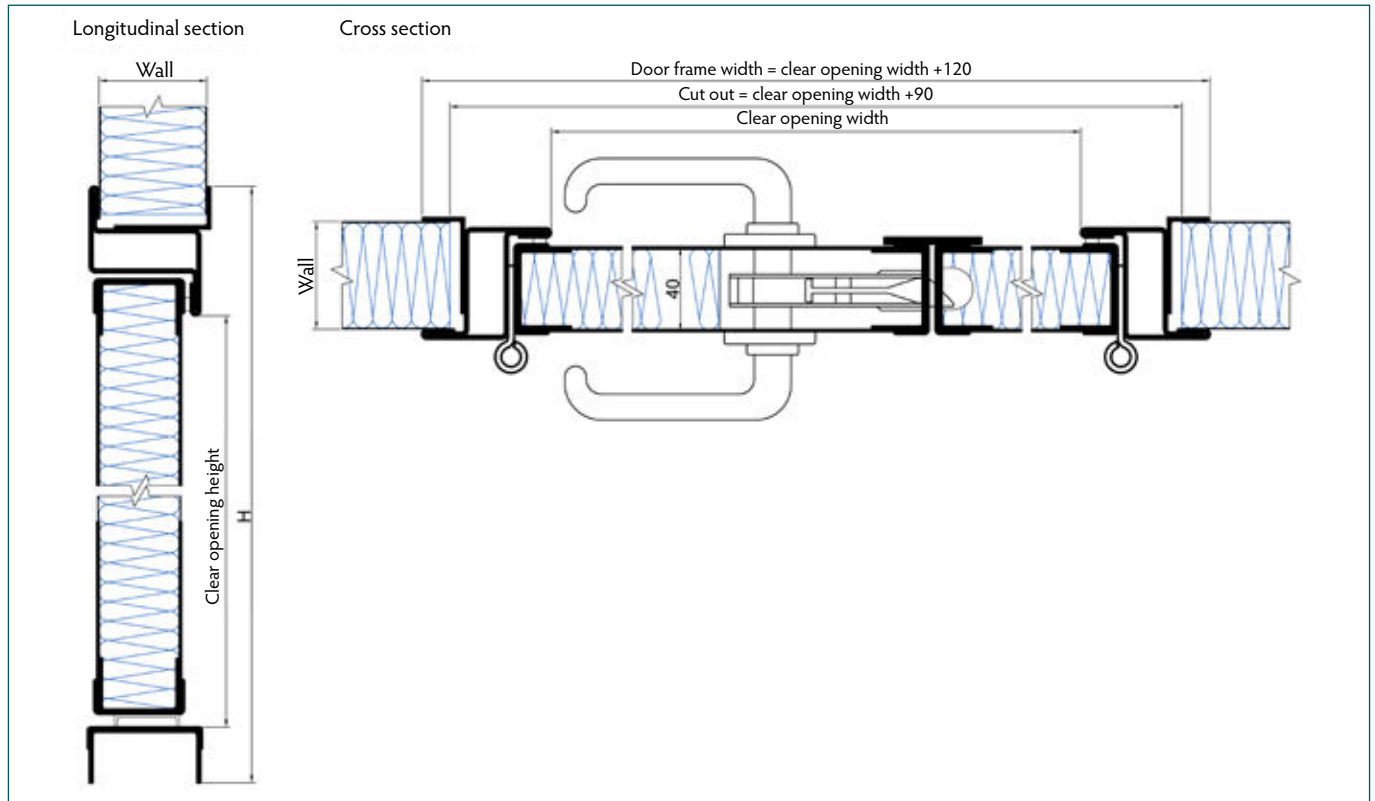


The B-15M double leaf accommodation door is used in B-15 fire rated wall systems and can be installed during or after the adjacent wall panels have been assembled. The split clamping frame can be adjusted to fit all relevant wall systems thicknesses. Depending on customer specifications various frame and coaming types as well as additional fixtures can be chosen.

A large variety of surface finishes are available. All of them fitted with a removable protection foil to prevent any damage from occurring during installation. The design of the B-15M double leaf accommodation door and all components have been tested and approved according to international standards.

Accommodation doors

Type B-15M double



Technical data	B-15M double
Covering layer (visible side)	Steel
Covering layer (back side)	Steel
Fire classification	B-15
Sound reduction	---
Thickness	40 mm
Element width - Clear opening	up to 2,200 mm
Element height - Clear opening	up to 2,200 mm
Weight	~ 105 kg *
Equipment - Ventilation	up to 500 cm ² (each leaf)
- Kick-out panel	up to 600 x 600 mm (each leaf)
- Window	up to 400 x 400 mm (each leaf) or Ø 400 mm
Coating	PVC foil varnish coated (others on request)
Certification	MED, USCG

* based upon clear opening of 1,600 x 2,000 mm respectively, without lock, escutcheons, handles and additional equipment

Accommodation doors

Type B-15K & B-15K50

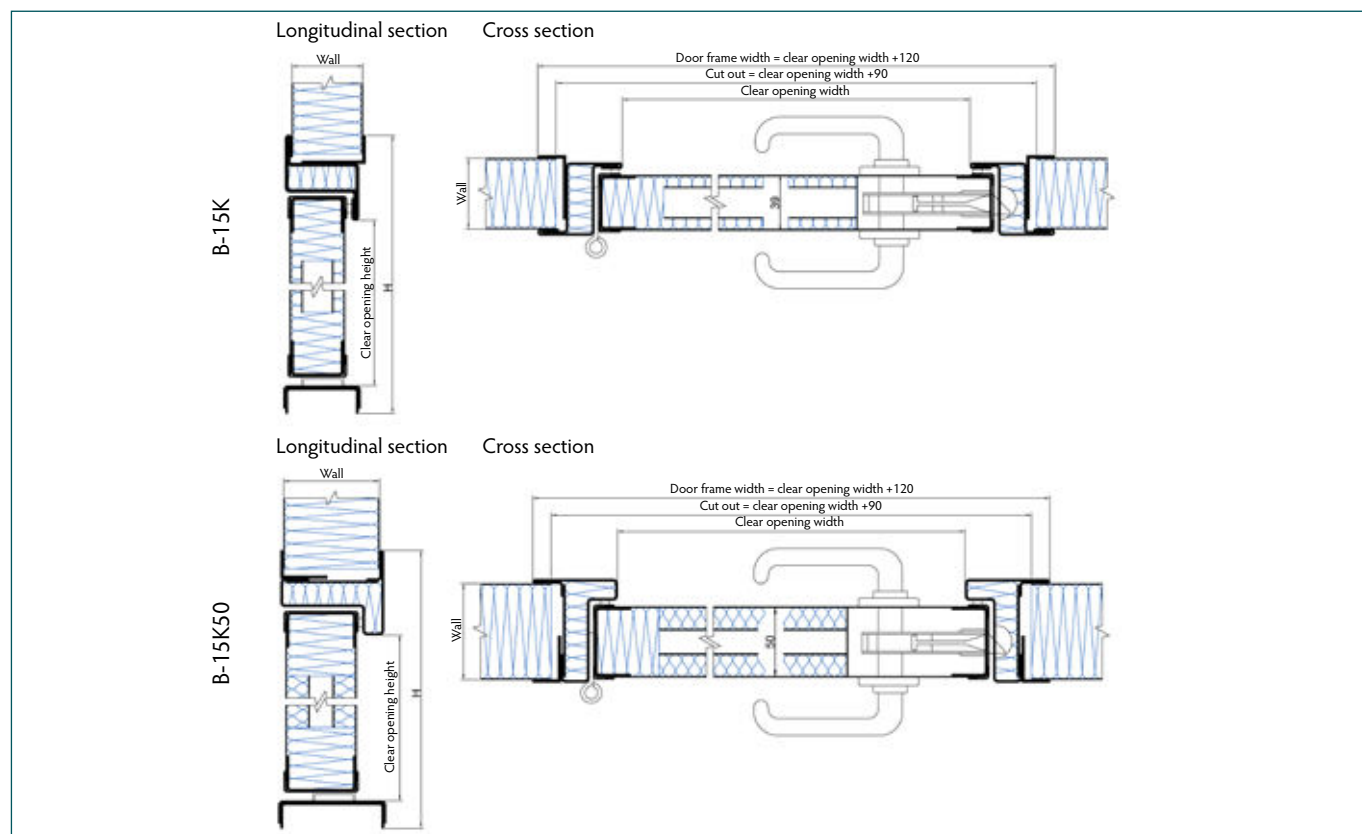


The B-15K and B-15K50 accommodation doors are used in B-15 fire rated wall systems and can be installed during or after the adjacent wall panels have been assembled. The doors come with a staggered ventilation as standard equipment. The split clamping frame can be adjusted to fit all relevant wall systems thicknesses. Depending on customer specifications various frame and coaming types as well as additional fixtures can be chosen.

A large variety of surface finishes are available. All of them fitted with a removable protection foil to prevent any damage from occurring during installation. The design of the B-15K and B-15K50 accommodation doors and all components have been tested and approved according to international standards.

Accommodation doors

Type B-15K & B-15K50



Technical data	B-15K	B-15K50
Covering layer (visible side)	Steel	Steel
Covering layer (back side)	Steel	Steel
Fire classification	B-15	B-15
Sound reduction	up to 41 dB*	up to 34 dB*
Thickness	39 mm	50 mm
Element width - Clear opening	up to 1,000 mm **	up to 650 mm
Element height - Clear opening	up to 2,100 mm **	up to 1,990 mm
Weight	~ 69 kg ***	~ 68 kg ***
Equipment - Ventilation	up to 150 cm ² - staggered	up to 200 cm ² - staggered
- Kick-out panel	up to 600 x 600 mm	up to 500 x 500 mm
- Spy eye	✓	✓
- Internal cable duct	---	✓
Coating	PVC foil varnish coated (others on request)	PVC foil varnish coated (others on request)
Certification	MED, USCG	MED, USCG

* please contact us for further information

** tested and certified according to MSC.1/Circ.1319 allowing additionally +15% in width & height (surface area +10%)

*** based upon clear opening of 650 x 1,950 mm and wall height of 2,200 mm, without lock, escutcheons, handles and additional equipment

Accommodation doors

Type B-15MK & B-15MK2

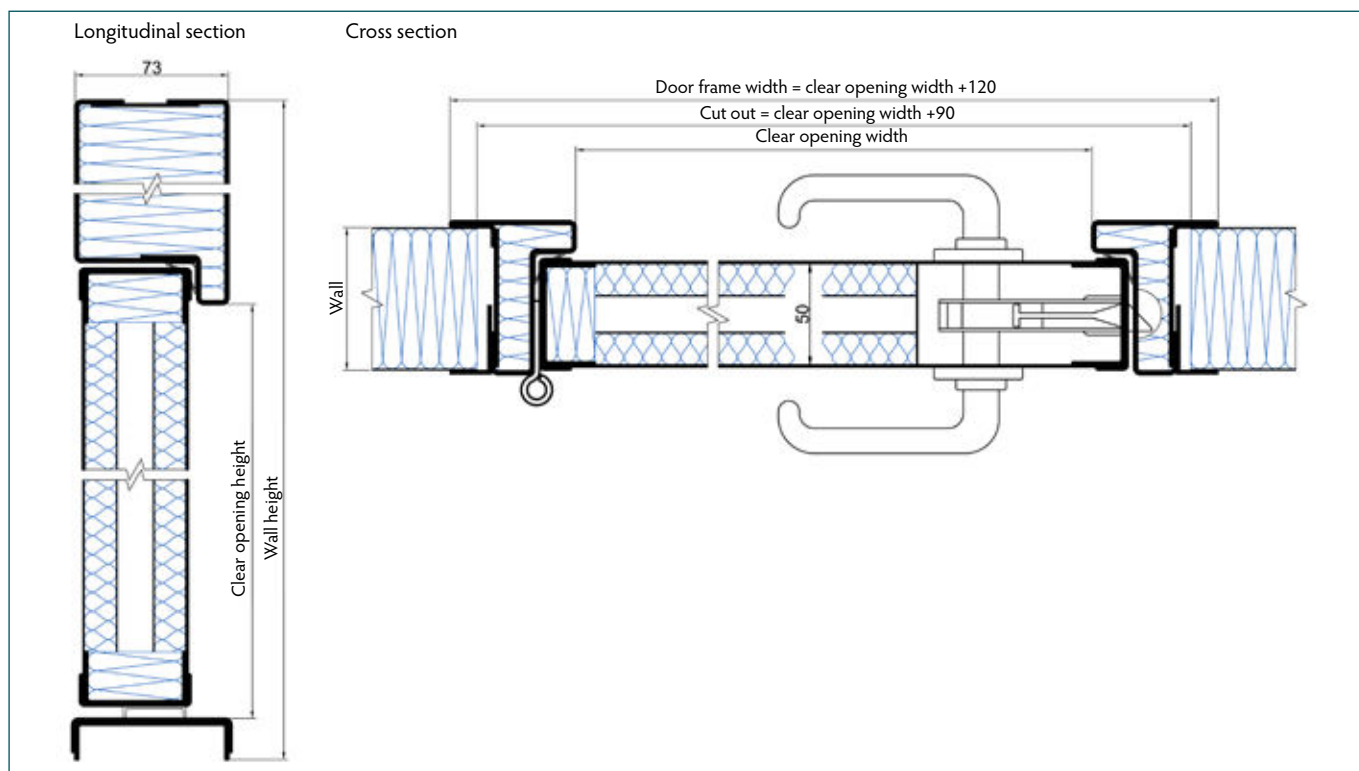


The B-15MK and B-15MK2 accommodation doors are used in B-15 fire rated wall systems and can be installed during or after the adjacent wall panels have been assembled. The doors have been designed for high sound reduction requirements of up to 42 dB. The split clamping frame can be adjusted to fit all relevant wall systems thicknesses. Depending on customer specifications additional fixtures can be chosen.

A large variety of surface finishes are available. All of them fitted with a removable protection foil to prevent any damage from occurring during installation. The design of the B-15MK and B-15MK2 accommodation doors and all components have been tested and approved according to international standards.

Accommodation doors

Type B-15MK & B-15MK2



Technical data	B-15MK	B-15MK2
Covering layer (visible side)	Steel	Steel
Covering layer (back side)	Steel	Steel
Fire classification	B-15	B-15
Sound reduction	up to 40 dB*	up to 42 dB*
Thickness	50 mm	50 mm
Element width - Clear opening	up to 898 mm **	up to 900 mm
Element height - Clear opening	up to 2,097 mm **	up to 2,100 mm
Weight	~ 75 kg ***	~ 101 kg ***
Equipment - Kick-out panel	---	up to 600 x 800 mm
- Spy eye	---	✓
- Internal cable duct	---	✓
Coating	PVC foil varnish coated (others on request)	PVC foil varnish coated (others on request)
Certification	MED, USCG	MED, USCG

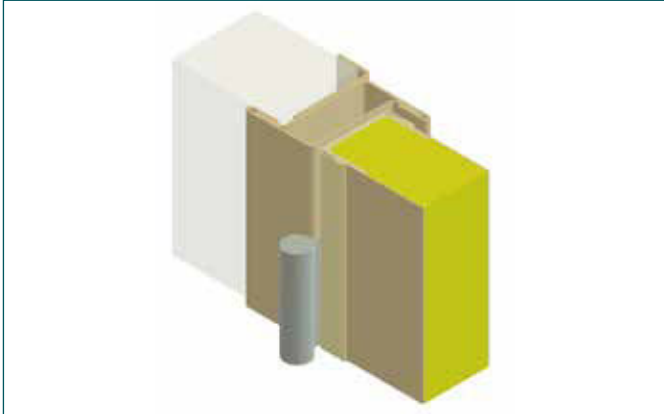
* please contact us for further information

** tested and certified according to MSC.1/Circ.1319 allowing additionally +15% in width & height (surface area +10%)

*** based upon clear opening of 800 x 2,000 mm and wall height of 2,200 mm, without lock, escutcheons, handles and additional equipment

Accommodation doors

Frame Types for B doors



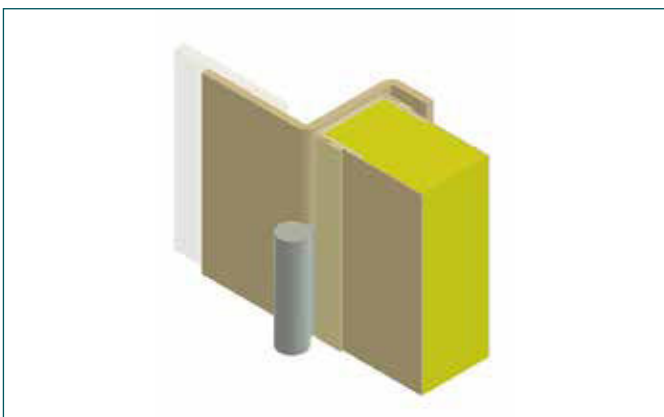
Z-Type



Box-Type



T-Type



Steel frame

Accommodation doors

Sill Types for B doors

Following types can be covered with stainless steel step rail.



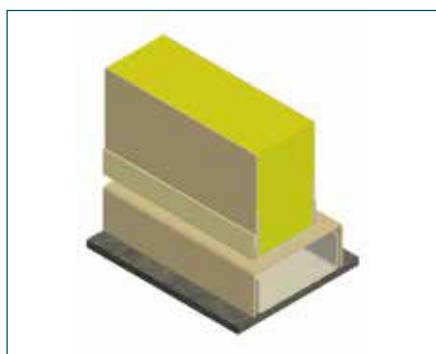
Type 1



Type 2



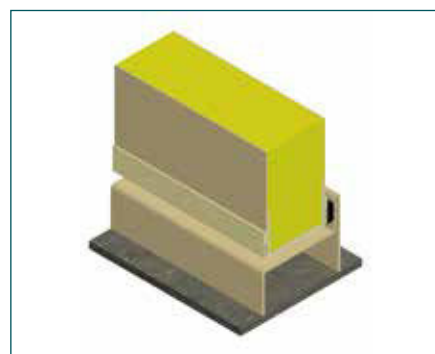
Type 3*



Type 4**



Type 5*



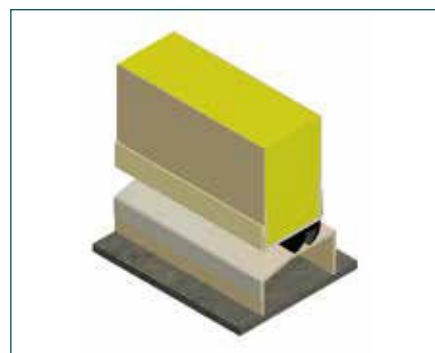
Type 7



Type 8



Type 9



Type 11

* door leafs can optionally be equipped with bottom gasket

** bottom profile of wall running continuously under door sill